

Frequently Asked Questions

Q: What is a Record of Decision?

A: Records of Decision issued by the Federal Highway Administration indicate formal federal approval of an Environmental Impact Statement (EIS) for a proposed highway project. This approval gives the state department of transportation the authority to proceed with design, land acquisition and construction as funding becomes available.

Q: Why was the Yellow Alternative selected?

A: The Yellow Alternative was identified as the environmentally preferred and selected alternative for the following reasons:

- Provides a more direct east-west route between downtown Des Moines and the U.S. 65 Bypass
- Provides direct access to the Chesterfield Neighborhood by utilizing the former rail corridor owned by the city
- Allows for future business access and development on both sides of the corridor and does not require new right-of-way be purchased along Scott Avenue
- Provides opportunities for economic development in the neighborhood
- Minimizes commercial relocations
- Allows Vandalia Road to be an alternate route and eliminates the risk of being delayed by trains stopped just west of Pleasant Hill Boulevard and near 43rd Street

Q: What happens next?

A: At this time there is no funding available to proceed beyond the environmental stage for Phase II of the SE Connector project. The City of Des Moines has begun programming funding in future years of the Capital Improvement Program for the second phase. As funding for the project becomes available, the following activities will take place:

- Development of final design drawings for construction
- Acquisition of needed right-of-way properties for the project
- Completion of any required permits for the project
- Construction of the project in stages, likely over a number of years

For additional information, visit www.seconnector.com



P.O. Box 8368
Des Moines, IA 50301

Please Contact Us:

- **Send mail to:**
SE Connector
P.O. Box 8368
Des Moines, IA 50301
- **Call:**
1-800-797-0565
- **Send e-mail to:**
info@seconnector.com
- **Visit the website at:**
www.seconnector.com

Questions and comments related to the project can be submitted electronically, by phone or by mail and will be documented and responded to by a project team member.

Los materiales del Southeast Connector de la ciudad de Des Moines están disponibles en español a su solicitud.

Presort Standard
US Postage Paid
Kansas City, MO
Permit #6412



The Connector

Summer 2010, Issue #5

Anticipated Construction Schedule

2010

- **SE Connector Bridges (over Des Moines River)**
Bridge work to be completed Fall 2010
- **SW 2nd to Bridges and Bridges to SE 4th**
Constructed as bridges are being completed – Fall 2010
- **SE 4th to SE 9th**
Expected completion Fall 2010

2011/12

- **SE 9th to SE 15th**
Construct connection to SE 14th Street via connections from SE Connector to Maury Street at SE 12th Street and SE 15th Street.

Future Phases

- **Extensions east of SE 15th to US 65**
Final design and construction of segments connecting to US 65 at Vandalia interchange (SE 15th – SE 18th; SE 18th – SE 30th; SE 30th to Vandalia) as future funding is identified.

FHWA selects Yellow Alternative in Record of Decision

In coordination with the City of Des Moines and the Iowa Department of Transportation, the Federal Highway Administration chose the Yellow Alternative in a Record of Decision on May 27, 2010. This officially concludes the Environmental Impact Statement process for the Southeast (SE) Connector project.

The Yellow Alternative was selected from several possible alternatives, including a No-Build Alternative, as part of the SE Connector project, which would create a multi-lane arterial road connection from Martin Luther King (MLK) Jr. Parkway at SE 14th Street to the Vandalia Road/U.S. 65 Bypass interchange.

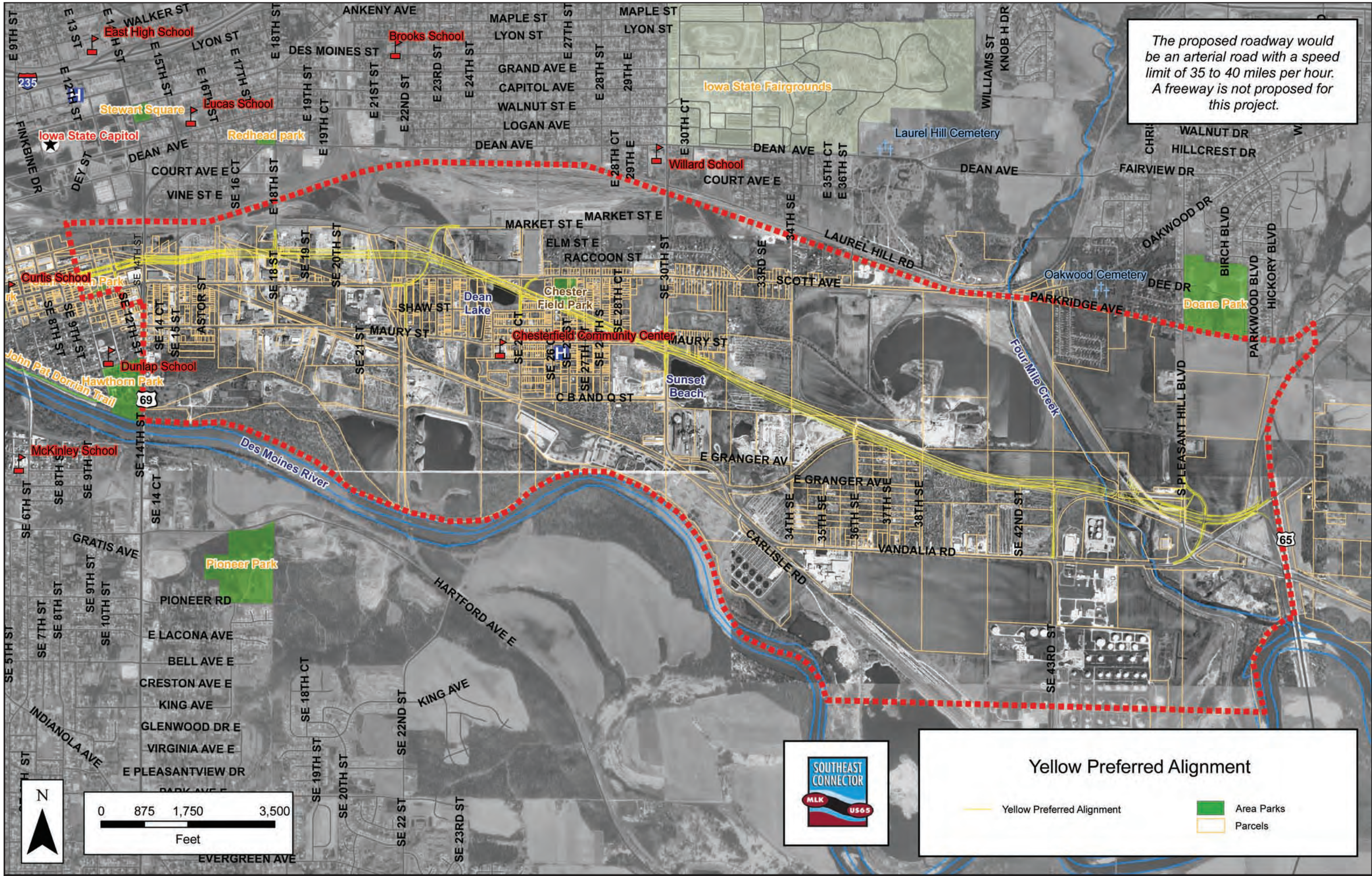
The alignment includes two vehicle lanes, one bicycle lane in each direction, a sidewalk on the north side and a shared pedestrian/bicycle trail on the south side. The Yellow Alignment begins at SE 14th Street and travels along an alignment mid-block between Scott Avenue and Market Street until it reaches the city-owned rail right of way. The alternative then follows the rail right of way southeast through the Chesterfield Neighborhood before turning east near Pleasant Hill Boulevard. From there, the alignment travels a short distance to the east where it reaches the existing U.S. 65 Bypass interchange at Vandalia Road.

The proposed improvements would connect to the improvements underway on MLK Jr. Parkway between SW 2nd Street and SE 9th Street. The bridges over the Des Moines River are already almost finished, with an anticipated completion of Fall 2010. See the proposed construction schedule for a detailed timeline of improvements.



Construction of SE Connector Bridges Nearing Completion

The proposed roadway would be an arterial road with a speed limit of 35 to 40 miles per hour. A freeway is not proposed for this project.



Yellow Preferred Alignment

- Yellow Preferred Alignment
- Area Parks
- Parcels

