



Spring 2016

# Neighbor Notes

*A discussion of project issues of importance to your neighborhood.*

## SE 15th – SE 30th to Open in May

Final work items are being completed for the E. Martin Luther King Parkway extension between SE 15th and SE 30th Streets. The majority of work is completed, and the section between SE 23rd and SE 30th is being used as a detour for work on Maury Street. Work remaining at the intersection of SE 30th and Maury will include traffic signals, masonry monuments, landscaping, and storm sewer.

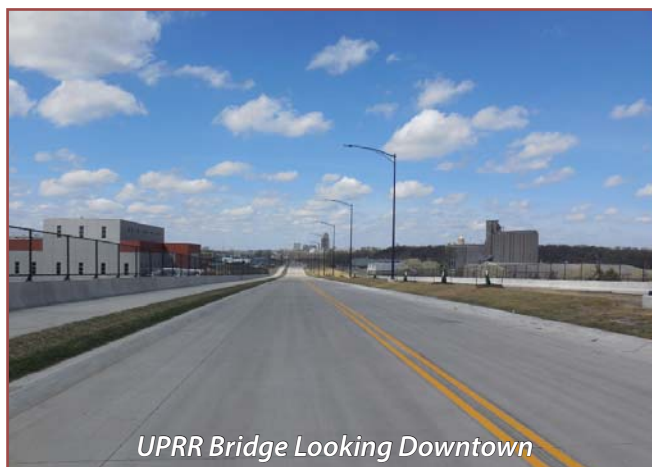
Maury Street will be permanently removed between SE 28th Street and SE 30th Streets. The new E. MLK Parkway (SE Connector) will be the new truck route through this section of town. All trucks will be required to divert off Maury Street at SE 23rd Street to the SE Connector. The new railroad overpass bridges are nearly complete, pending final inspections from the DOT and Railroads. These bridges will eliminate traffic delays due to trains leaving the Union Pacific railroad yard.

The new section of SE Connector between SE 15th – SE 30th is a half-build of the ultimate roadway. Only half of the roadway was paved due to budget constraints, but all property and infrastructure was constructed to allow the future widening. This half-build allowed the project to reach all the way to SE 30th Street, instead of only SE 23rd Street. Completing the future lanes will be relatively easy as the final grading is completed, along with all storm sewer and utilities. Only paving and traffic signal work will be required to create the full four-lane section.

A Grand Opening Ceremony is scheduled for May 20th, 2016. Look for press releases from the City of Des Moines regarding the official date, time, and location. Upon the completion of the ceremony, the remainder of the newly completed section of roadway will open. This opening will allow traffic to travel on the SE Connector between MLK (Fleur Drive) and SE 30th Street.



*Monuments at SE 25th Ct.*



*UPRR Bridge Looking Downtown*



*Deans Lake looking at SE 23rd Street*

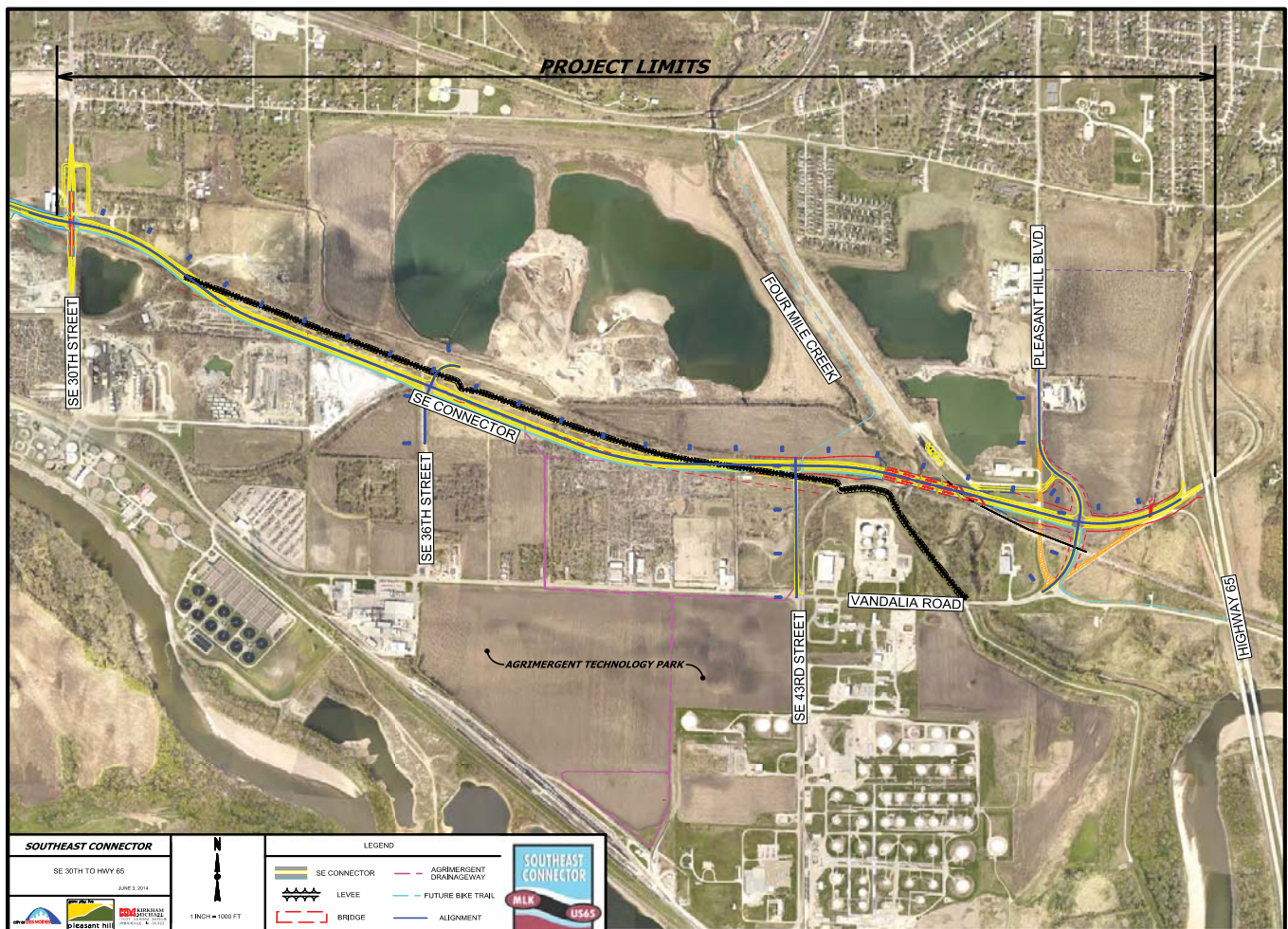
# SE 30th – US 65 Update

Completion of Conceptual Design will wrap up in the summer of 2016. This phase of the project development included preliminary alignment and profile of the roadway and coordination with the United States Army Corps of Engineers (USACE) regarding Fourmile Creek, the SE Des Moines Levee, and the floodplains in the project corridor. The project team also coordinated with the Norfolk Southern Railroad, potentially impacted property owners, and the Iowa Department of Natural Resources.

Environmental and geotechnical soil borings were completed as part of the conceptual design phase to help identify areas of poor soils or contamination. The roadway will run from SE 30th Street southeasterly along

the south edge of the SE Des Moines Levee until it has to pass over Fourmile Creek and the FS Coop railroad spur. There will be a bridge of approximately 1,400 LF at this location to avoid any railroad crossings.

This section is a joint project with the City of Pleasant Hill, and the cities have entered into a 28E agreement to work cooperatively on the project. Due to the TIGER grant that was awarded to the SE 15th – SE 30th project, construction on this phase cannot start until 2021. The estimated cost for construction of this remaining 2.5 miles of roadway is approximately \$40 Million.



Watch the progress of this construction project on a live camera feed at:  
<http://www.seconnector.com>